

movexx
driven by brain power



Movexx **T1000** M090
PARTS & OPTIONS
2021



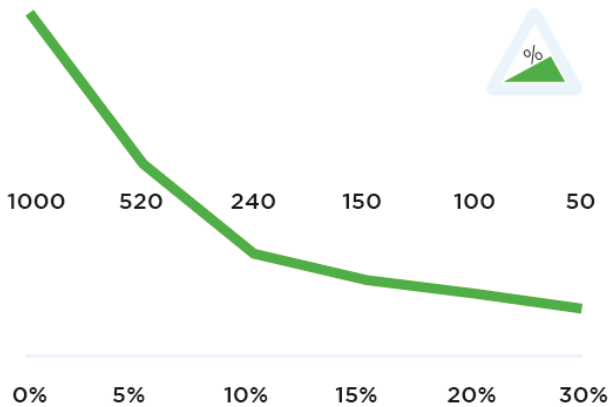
Specifications

Technical details

Frame	Steel, powder coated
Drive	24V DC, 300W, 100 rpm
Weight	40 kg (88.2 lbs)
Max. pulling force	800 N
Weight trailer	Max. 1000 kg (2204.5 lbs)
Battery	Exchangeable battery pack
Speed Max.	5 km/h (3.1 mph)
Drive wheels	Full rubber Ø 250 x 80mm (9.8 x 3.1 in)
Adze height	831 - 985 mm (32.7 - 38.8 in)
Noise level	63,8 dB
To use from	-10° / 40° C (14° / 104° F)

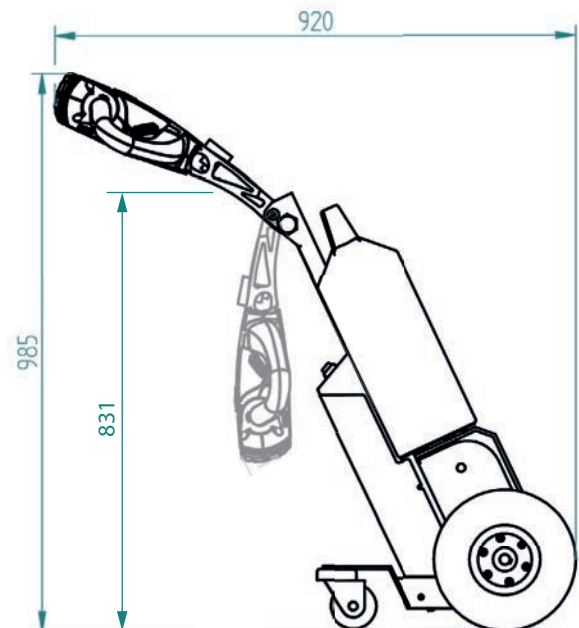
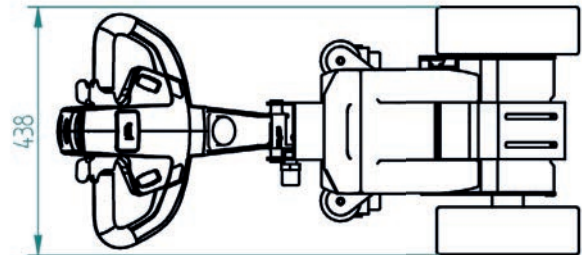
© 2021 Movexx International B.V. The images shown are used for illustration purposes only and may differ from the products indicated. No rights can therefore be derived from it. Printing errors are subjected to change. The datasheet is the confidential product of Movexx International B.V. and no portion of this datasheet may be copied, performed, or redistributed without the express written authority of Movexx International B.V.

Pulling power (in kg)

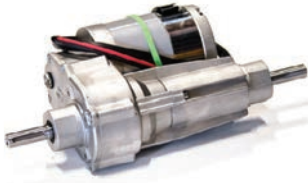


Measured with a trolley with 2 swivel wheels and 2 fixed castors. Wheel Ø 160 mm.

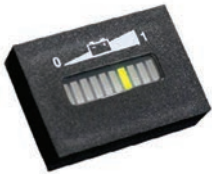
Dimensions



Standard parts



Motor 300W / 100rpm
(6911345X) without brake
Item number M1032



Curtis battery indicator
Item number M3165



Charger (external) for
Lithium battery, 25,6V / 10A
Item number OPT0013



Battery Lithium green
(LiFePO4) 25,6V / 20Ah
Item number 335474



Drive wheel, full rubber
Black Ø 250 x 80mm
Item number M0248



Adjustable tillerhead
Item no M1002-0100

Standard parts



Belly button RED
Item number M0121-BBUT



Curtis drive controller
DC 24V,
Inom 30A, Imax 50A
Item number M3161



2 programmable speeds

Options



Extra plug to recharge
the battery
*for on-machine battery
charging*
Item number OPT0001



Set Drive wheels
full rubber, non-marking
Gray 2x Ø 250 x 80 mm
Item number 335572

Options



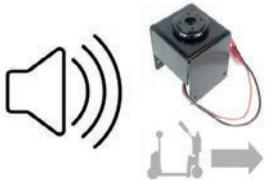
Set Drive wheels,
foam filled
Black 2x Ø 250 x 80 mm
Item number 335573



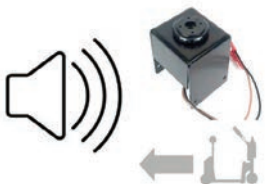
Set Drive wheels,
foam filled, non-marking
Gray 2x Ø 250 x 80 mm
Item number 335574



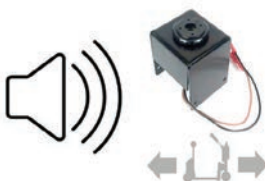
Horn 90dB for
steel tiller head supp.
Item number OPT0057



Audio signal + Horn 90 dB
(while driving forward)
Item number 335409



Audio signal + Horn 90 dB
(while driving backward)
Item number 335408



Audio signal + Horn 90 dB
(while driving)
Item number 335449

Options



Horn 103dB
Item number 335396



Emergency stop complete
Item number 335601



Strobe light
(only while driving)
Item no. 335398



Strobe light
(continuous)
Item no. 335399



Remote set (**without**
flippers switch off)
4 channel, 2,4 GHz
Item number 335391



Remote set (**with**
flippers switch off)
4 channel, 2,4 GHz
Item number 335643

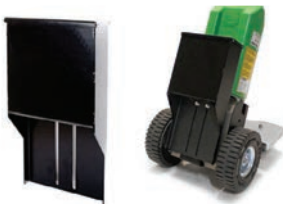
Options



Electromagnetic parking brake T1000
Item number OPT0004



Counterweight (back)
20kg
Item number 335891



Counterweight (front)
30kg
Item number OPT0044



Hour tracker
Item number 335394



Antistatic strip
Item number OPT0058



Code lock
Item number OPT0068

Options



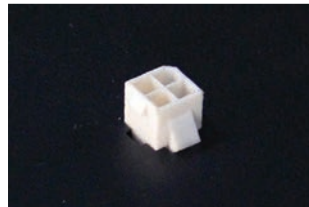
Document holder for steel tiller head supp.
M1002-0100
Item number OPT0053



Storage system (incl. snap hooks) for steel tiller head supp.
M1002-0100
Item number OPT0482



Preparation electric hook
Item number 335403



Diagnostic connector
Item number 335452



Ignition key (unequal)
Item number OPT0145



Ignition key 701 (equal)
Item number OPT0146

Options



On/off rotary switch
Item number OPT0016



Parking floorlabel Ø 60 cm
Item number OPT0245



Customized programming
Please indicate specific settings
Item number OPT0170



Programmer for Curtis
Item number M3167



Frame for 4-wheel waste container
Item number OPT0085



Adaptor for airport/shopping trolley
Item number OPT0514

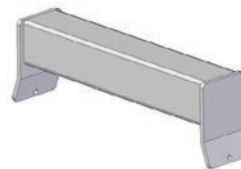
Options



Strobe light (only while driving)
Item no. 336221



Strobe light (continuous)
Item no. 336222



Welding part for trolley (profile 50x50 mm)
Item number OPT0032



Bolt-on part for trolley (profile 50x50 mm)
Item number OPT0033



Attachment for trolley Caddie/Wanzl
Item number OPT0040



Urgent order purchase
Item number SPOED

Options



Frame for
770 l. and 240 l. container
Item number OPT0375



Protective cover
Item number OPT0465

Batteries and Chargers



Battery Lithium green
(LiFePO4) 25,6V / 36Ah
Item number OPT0106



Charger (external) for
Lithium battery, 25,6V / 10A
Item number OPT0013



Wall mounted Lithium
charger, incl. Lithium
charger 25,6V / 10A
Item number OPT0023

Batteries and Chargers



Charging station Lithium
(5x), incl. Lithium
charger 25,6V / 10A
Item number OPT0029

Adapters



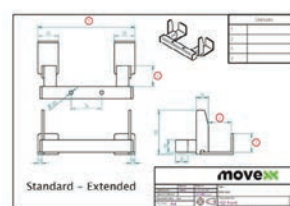
Base part hook 15°
Item number H7010



Base part hook 15°
(double spring)
Item number H7020

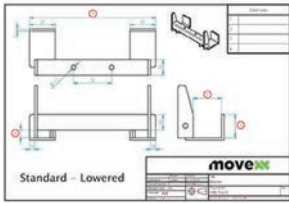


Angle limitation hook 80°
Item number OPT0218

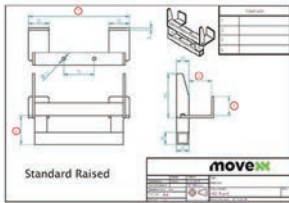


Customized hook
*Please complete
corresponding sheet*
Item number HA5000

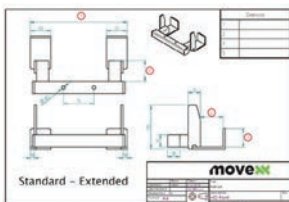
Adapters



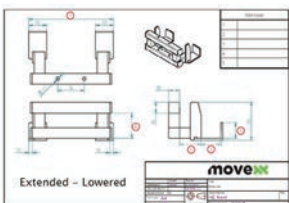
Customized hook (low)
*Please complete
 corresponding sheet*
Item number HB5000



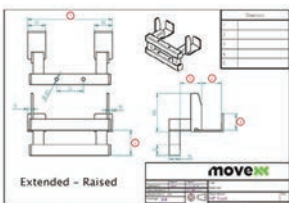
Customized hook (raised)
*Please complete
 corresponding sheet*
Item number HC5000



Customized hook
 (extended)
*Please complete
 corresponding sheet*
Item number HD5000



Customized hook
 (extended/low)
*Please complete
 corresponding sheet*
Item number HE5000



Customized hook
 (extended/raised)
*Please complete
 corresponding sheet*
Item number HF5000

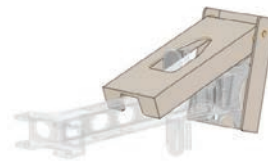


Hook for LKE platform-
 wagon (type X)
Item number H0076

Adapters



Hook K-Hartwall dolly
 (DOS1617/1636, 25°)
Item number H0086



Hook locking system
 stainless steel
Item number OPT0012



Electric height adjustment,
 Stroke 100 mm,
 Actuator 900 N
Item number OPT0506



Electric height adjustment,
 Sprung, Stroke 100 mm,
 Actuator 900 N
 (gas spring 200 N)
Item number 336315



Vacuum hook
 for stainless steel trolley
Item number H0093



Electric locking module
 for hook
Item number 335887

Adapters



Clamping hook (HD)
(required with
335968 or 335975)
Item number 335482



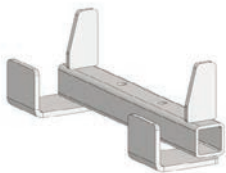
Set 1 (0 - 60mm)
Item number 335968



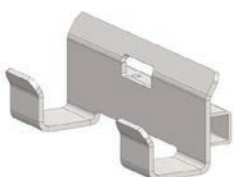
Set 2 (40 - 100mm)
Item number 335975



Tilting clamping hook for
wooden profile 145x20mm
Self-aligning connection,
pivoting angle 15° up/down
Item number 335816

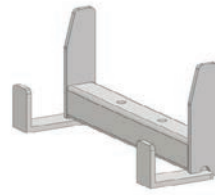


HA270.43.40.0.0
Hook for 40 mm profile
(K-Hartwall pallet trolley;
DOS1870)
Item number H0003

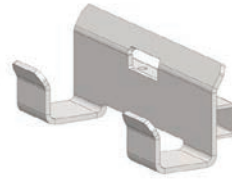


HA245.53.45.15.0
Hook for 50 mm profile
(heavy duty)
Item number H0004

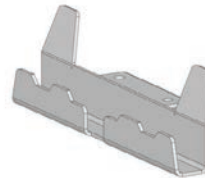
Adapters



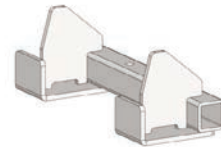
HA250.43.35.0.0
Hook for 40 mm profile
Item number H0051



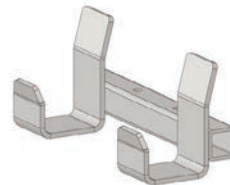
HB245.43.30.5.0
Hook for 40 mm profile
Item number H0054



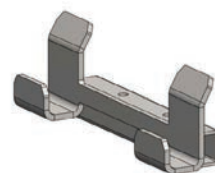
HA250.23.27.0.0
Hook for 20 mm profile
Item number H0067



HD245.10.35.0.50
Front hook for Hatchery
trolley (EMKA)
Item number H0090

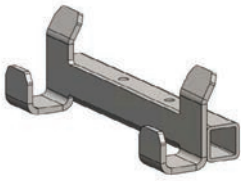


HB245.60.45.30.0
Hook for FEIL plastic floor
trolley
Item number H0092

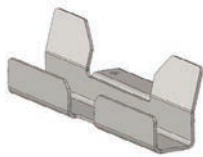


HC250.28.25.0.0
Hook for 25 mm profile
Item number H0094

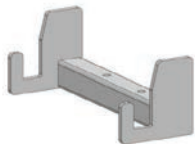
Adapters



HA250.33.30.0.0
Hook for 30 mm profile
Item number H0095



HA250.35.30.0.0
Hook for 30 mm profile
(furniture trolley)
Item number H0097



HF242.23.30.15.20
Hook for 20 mm profile
(hospital logistics)
Item number H0116



HB135.18.20.35.0
Hook for 15 mm profile
(K-Hartwell dolly 400x600)
Item number H0125

Most common spareparts



Battery Lithium green
(LiFePO4) 25,6V / 20Ah
Item number 335474

Most common spareparts



Charger (external) for
Lithium battery, 25,6V / 10A
Item number OPT0013



Battery guide
(stainless steel)
Item number M0482



Battery connector SB50
Item number M0105



Belly button RED
Item number M0121-BBUT



Switch buttons (2x) green
Item number M0121-KNOP-GROEN



Switch tiller head
excl. buttons
Item number M0121-FLIPPER

Most common spareparts



Feather/shaft Throttle
Item number M0121-4



Switch FAST/SLOW
tiller head green
Item number M0121-SPEED-GROEN



Switch ON/OFF
tiller head green
Item number M0121-AANUIT-GROEN



Plain sleeve bearing
Ø8 / 12 x 6, 16 x 2 mm
Item number M4038



Locking pin
M16 x 1,5 mm
Item number M0001



Torsion spring for hook
Item number M0116-SP

Most common spareparts



Curtis drive controller
DC 24V,
Inom 30A, I_{max} 50A
Item number M3161



Carbon brushes (set of 4)
for Motor 300W
Item number M0186



LED battery indicator
Item number M3165



Cable harness,
universal Curtis
Item number 335406



Fuse 5A
Item number M0506



Fuse Maxi 40A
Item number M0254

Most common spareparts



Drive wheel, full rubber
Black Ø 250 x 80 mm
Item number M0248



Drive wheel
full rubber, non-marking
Gray Ø 250 x 80 mm
Item number M0115



Drive wheel, foamed at 2b
Black Ø 250 x 80 mm
Item number M0091

Most common spareparts



Drive wheel, foamed at
2b, gray Ø 250 x 80 mm
Item number M0092



Castor wheel
Black Ø 80 mm
Item number M0013

applications



movexx
driven by brain power

Generatorstraat 17-19
3903 LH Veenendaal
The Netherlands

T +31 (0)318 519900
E info@movexx.com
W www.movexx.com

